

# BOARD MOUNT SOCKET (Square Tail, Elevated)

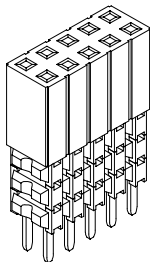
## FEATURES

- Mates with itself for thru-board stacking without headers
- Standard and TAILORED heights available
- Accepts 0.025" (0,64mm) square posts
- Low Insertion Force (LIF) contacts available
- Mates with Crane's PEG, MPEG, DPEG, LPEG, TPEG Headers

## STANDARD PART DIMENSIONS

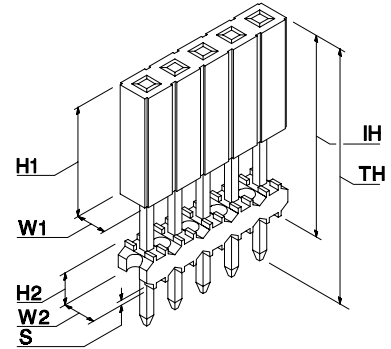
| INSULATOR BODY (TOP)    |           | Single Row                                 | Dual Row        | Triple Row      |
|-------------------------|-----------|--|-----------------|-----------------|
| <b>W1</b>               | WIDTH     | 0.100" / 2,54mm                            | 0.200" / 5,08mm | 0.300" / 7,62mm |
| <b>H1</b>               | HEIGHT    | 0.325" / 8,25mm                            | 0.325" / 8,25mm | 0.325" / 8,25mm |
| INSULATOR BODY (BOTTOM) |           | Single Row                                 | Dual Row        | Triple Row      |
| <b>W2</b>               | WIDTH     | 0.096" / 2,44mm                            | 0.198" / 5,03mm | 0.295" / 7,49mm |
| <b>H2</b>               | HEIGHT    | 0.098" / 2,49mm                            | 0.098" / 2,49mm | 0.098" / 2,49mm |
| <b>S</b>                | STANDOFF  | 0.015" / 0,38mm                            | 0.015" / 0,38mm | 0.015" / 0,38mm |
| OVERALL HEIGHT          |           | Single Row                                 | Dual Row        | Triple Row      |
| <b>TH</b>               | TOTAL     | Please refer to the chart on the next page |                 |                 |
| <b>IH</b>               | INSTALLED |  |                 |                 |
| MATERIALS               |           |  |                 |                 |
| INSULATOR               |           | Glass Filled Polyester (UL94V-0)           |                 |                 |
| CONTACT                 |           | Phosphor Bronze                            |                 |                 |

See SPECIFICATIONS and PERFORMANCE DATA for more information.

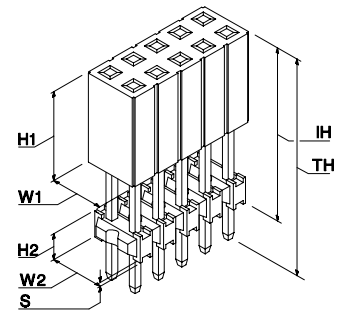


**Elevated  
Sockets available in  
a SOLID STACK  
option as well.**

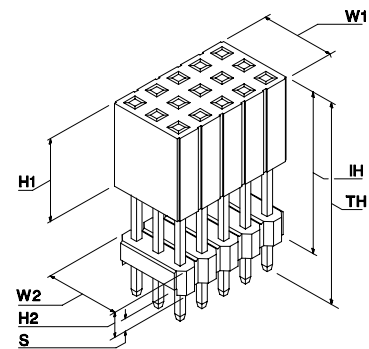
## SINGLE ROW (1 to 36 Positions)



## DUAL ROW (2 to 72 Positions)



## TRIPLE ROW (9 to 108 Positions)



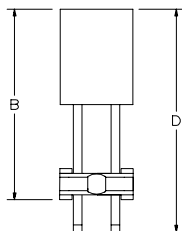
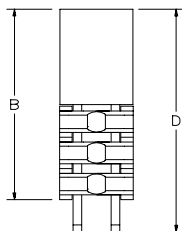
**SAMPLE HOTLINE: 1-800-676-7644**

**0.100" (2,54mm) Centers  
To Mate With 0.025" (0,64mm)  
Square Mating Posts**

**HOW TO ORDER CRANE'S MATP/MATL SERIES**

**STANDARD PART NUMBER**



|   |  |          |               |          |          |                 |  |  |  |  |                             |                         |          |          |  |
|---|--|----------|---------------|----------|----------|-----------------|--|--|--|--|-----------------------------|-------------------------|----------|----------|--|
| <b>PRODUCT SERIES</b>   | <b>MAT</b>                                     |          |               |          |          |                 |  |  |  |  |                             |                         |          |          |  |
| <b>HIGH TEMP OPTION</b>   | <b>GMAT</b>                                    |          |               |          |          |                 |  |  |  |  |                             |                         |          |          |  |
| <b>CONTACT</b>  | STANDARD                                       | <b>P</b> |               |          |          |                 |  |  |  |  |                             |                         |          |          |  |
| LIF is not available with tin plating on mating area.   | LIF  | <b>L</b> |               |          |          |                 |  |  |  |  |                             |                         |          |          |  |
| <b>NUMBER OF POSITIONS</b>  | SINGLE   |          | <b>01-36</b>  |          |          |                 |  |  |  |  |                             |                         |          |          |  |
|   | DUAL   |          | <b>02-72</b>  |          |          |                 |  |  |  |  |                             |                         |          |          |  |
|   | TRIPLE   |          | <b>09-108</b> |          |          |                 |  |  |  |  |                             |                         |          |          |  |
| <b>NUMBER OF ROWS</b>   | SINGLE   |          |               | <b>S</b> |          |                 |  |  |  |  |                             |                         |          |          |  |
|   | DUAL   |          |               | <b>D</b> |          |                 |  |  |  |  |                             |                         |          |          |  |
|   | TRIPLE   |          |               | <b>T</b> |          |                 |  |  |  |  |                             |                         |          |          |  |
| <b>TYPE OF SOCKET</b>   | STRAIGHT                                       |          |               |          | <b>S</b> |                 |  |  |  |  |                             |                         |          |          |  |
| <b>CONTACT PLATING (See Plating Specs Below)</b>  | CHOOSE G, T or M,H,L,F                         |          |               |          |          |                 |  |  |  |  |                             |                         |          |          |  |
|   | NOTE: Some platings may be subject to minimums |          |               |          |          |                 |  |  |  |  |                             |                         |          |          |  |
| <b>TAIL</b>   | SQUARE   |          |               |          |          |                 |  |  |  |  | <b>Q</b>                    |                         |          |          |  |
|   | KINKED   |          |               |          |          | 0.025" / 2,54mm |  |  |  |  | <b>K</b>                    |                         |          |          |  |
| <b>INSULATOR SPACERS</b>  | SOLID STACK                                    |          |               |          |          |                 |  |  |  |  |                             |                         | <b>A</b> |          |  |
|   | SINGLE INSULATOR AT BOTTOM                     |          |               |          |          |                 |  |  |  |  |                             |                         | <b>B</b> |          |  |
| <b>SELECTED OPTIONS</b>   |  |          |               |          |          |                 |  |  |  |  | <b>INSTALLED HEIGHT "B"</b> | <b>TOTAL HEIGHT "D"</b> |          |          |  |
| Many other sizes are available. Please contact the factory and give us your EXACT requirements. |  |          |               |          |          |                 |  |  |  |  | 0.400" = B                  | 0.525" = F              | <b>B</b> | <b>F</b> |  |
|   |  |          |               |          |          |                 |  |  |  |  | 0.435" = C                  | 0.525" = F              | <b>C</b> | <b>F</b> |  |
|   |  |          |               |          |          |                 |  |  |  |  | 0.435" = C                  | 0.725" = N              | <b>C</b> | <b>N</b> |  |
|   |  |          |               |          |          |                 |  |  |  |  | 0.435" = C                  | 0.915" = T              | <b>C</b> | <b>T</b> |  |
|   |  |          |               |          |          |                 |  |  |  |  | 0.500" = G                  | 0.725" = N              | <b>G</b> | <b>N</b> |  |
|   |  |          |               |          |          |                 |  |  |  |  | 0.535" = H                  | 0.725" = N              | <b>H</b> | <b>N</b> |  |
|   |  |          |               |          |          |                 |  |  |  |  | 0.535" = H                  | 0.915" = T              | <b>H</b> | <b>T</b> |  |
|   |  |          |               |          |          |                 |  |  |  |  | 0.600" = L                  | 0.725" = N              | <b>L</b> | <b>N</b> |  |
|   |  |          |               |          |          |                 |  |  |  |  | 0.635" = M                  | 0.725" = N              | <b>M</b> | <b>N</b> |  |
|   |  |          |               |          |          |                 |  |  |  |  | 0.635" = M                  | 0.915" = T              | <b>M</b> | <b>T</b> |  |
|   |  |          |               |          |          |                 |  |  |  |  | 0.700" = Q                  | 0.915" = T              | <b>Q</b> | <b>T</b> |  |



|   |            |            |   |   |
|---|------------|------------|---|---|
|   | 0.735" = R | 0.915" = T | R | T |
| Crane's MATP Series can be used with our MPEG Series for ULTRA-HIGH board stacking needs. | 0.800" = V | 0.915" = T | V | T |
|   | 0.835" = W | 0.915" = T | W | T |

## CRANE CONNECTORS - PLATING SPECIFICATIONS

| PLATING OPTIONS |            | CONTACT AREA<br>Inches (Millimeters) | PC TAIL<br>Inches (Millimeters)      | UNDERPLATE<br>Inches (Millimeters) |
|-----------------|------------|--------------------------------------|--------------------------------------|------------------------------------|
| <b>G</b>        | Selective  | 15 $\mu$ " (0,00038) Gold            | 100 $\mu$ " (0,00254) Tin/Lead - Min | 50 $\mu$ " (0,00127) Nickel - Min. |
| <b>T</b>        | Tin / Lead | 100 $\mu$ " (0,00254) Tin / Lead     | 100 $\mu$ " (0,00254) Tin/Lead - Min | 50 $\mu$ " (0,00127) Nickel - Min. |
| <b>M</b>        | Selective  | 50 $\mu$ " (0,00127) Gold            | 100 $\mu$ " (0,00254) Tin/Lead - Min | 50 $\mu$ " (0,00127) Nickel - Min. |
| <b>H</b>        | Selective  | 30 $\mu$ " (0,00076) Gold            | 100 $\mu$ " (0,00254) Tin/Lead - Min | 50 $\mu$ " (0,00127) Nickel - Min. |
| <b>L</b>        | Selective  | 10 $\mu$ " (0,00025) Gold            | 100 $\mu$ " (0,00254) Tin/Lead - Min | 50 $\mu$ " (0,00127) Nickel - Min. |
| <b>F</b>        | Selective  | 3 $\mu$ " (0,00008) Gold             | 100 $\mu$ " (0,00254) Tin/Lead - Min | 50 $\mu$ " (0,00127) Nickel - Min. |

|  |  |
|--|--|
| <br>UL File No. E120111 (N)         | ISO9001<br><br>Crane Connectors<br>File No. A-3620 |
| Recognized to U.S. and Canadian requirements under the Component Recognition Program of Underwriters Laboratories Inc. | Registered by UL to ISO9001 under UL's accreditation by Raad voor de Certificatie (RvC), the Dutch Council for Certification.          |

ENGINEERING NOTE: The information presented in this catalog page is accurate to the best of our knowledge. Due to ongoing efforts to advance design and material performance, the information is subject to change without notice.

**SAMPLE HOTLINE: 1-800-676-7644**

**CRANE CONNECTORS** • 4700 Smith Road • Cincinnati, Ohio 45212 USA • E-mail Address: [info@craneconnectors.com](mailto:info@craneconnectors.com)  
 Phone: (513) 631-4700 • Fax (513) 631-5700 • Toll Free US (800) 676-7644 • Canada (800) 420-7310